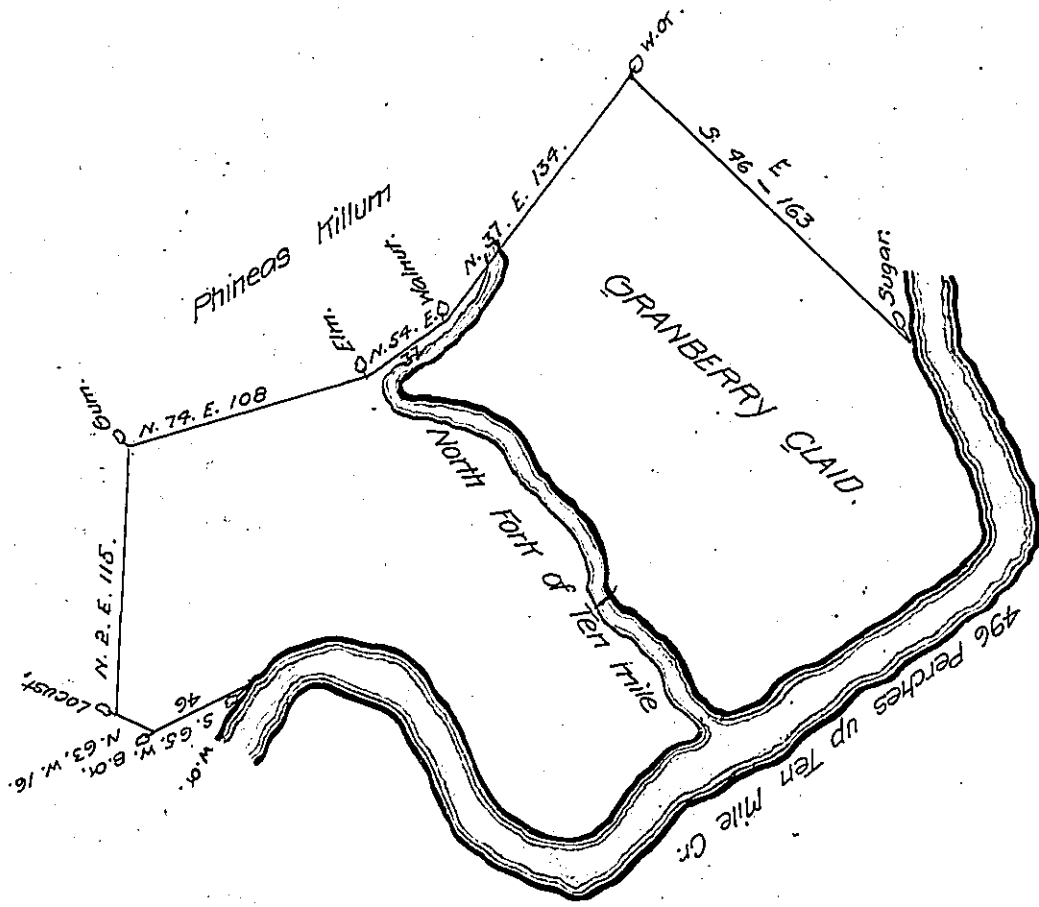


See A66-1
A34-19
D45-12



In pursuance of an Order of Survey No 3317 The above is a Draught of of a Tract of Land Situate on Ten Mile Creek on the West Side Monongahela - Called Granberry Claud Containing Three Hundred and Seventy two Acres and 80 Perches with Six P. Cent Allowence for Roads &c. Surveyd May 3^d 1784 for Henry Enoch.

by J^r.^o Hoge D. S.

John Lutens Esq^r S^r G^r

The Order in the Name of Frederick Baumgertner.

IN TESTIMONY that the above is a copy of the original remaining on file in the Department of Internal Affairs of Pennsylvania, made conformably to an Act of Assembly approved the 16th day of February, 1833, I have hereunto set my Hand and caused the Seal of said Department to be affixed at Harrisburg, this twenty sixth day of March 1908.

Henry Howell
Secretary of Internal Affairs.